



LIGHT & SHADE

Monthly Newsletter of the Macquarie Towns Arts Society Inc.

August 2024

Volume 32 Issue 7

PO Box 1058 Richmond NSW 2753
info@mtas.com.au
www.mtas.com.au

THE SOCIETY MEETS ON
2ND TUESDAY OF EACH MONTH

from the President

Hello All,

With one month left of Winter we have lots ahead on the calendar to look forward to.

We are excited about our small to medium works exhibition at Richmond Marketplace coming up on the 15th to 18th of August, which is always very popular and brings in some good local crowds and sales for our members. I hope you got your entries in!

We are also looking forward to welcoming Cheryl Yin Lo on 13th August to demonstrate her skills in Print Making through dry point etching & glass print techniques.

Thank you to Joe Cartwright for his demonstration of water-colours in June, which we enjoyed very much.

Don't forget our Wednesday Art Group and Portrait Group are going well and are great activities for our members to attend.

The Kids School Holiday Workshops were a success again and we look forward to the next round coming up in October.

At the end of August the Hawkesbury Artists and Artisans Trail have their Open Studio Weekend on Saturday 24th and Sunday 25th, 10am to 4pm each day. MTAS is a Sponsor of this event and a number of our members are on the Trail, so make sure you make plans for this great creative weekend in our local area. Have a look at the website to plan your visits on the trail www.haat.com.au

Please note our AGM is in September and if any one can help on the committee for any roles we always greatly appreciate members stepping up to get involved and if you haven't renewed your membership now is the time.

Stay warm and arty everyone!

Look forward to seeing you all soon,

Satya

MTAS COMMITTEE 2023 - 2024

President Satya Morrison
Publicity Officer, Technical Officer
HAAT Rep. Social Media & Web
M: 0483 895 098

Vice President Kym Morris
CASS President
M: 0413 809 685

Treasurer Sheilana Prosper
Public Officer
M: 0473 806 946

Asst. Treasurer Mark Wilson
M: 0408 343 629

Secretary Pat Bakarich
M: 0415 200 446

Asst. Secretary Sue Kennedy
M: 0448 224 287

Membership Officer Sally Johnstone
M: 0421 324 124

Functions Officer Leigh Cunningham
M: 0401 228 624

Children's Art Co-ordinator Deidre Morrison
FoHAC&RG Representative
T: 4578 3555 M: 0412 979 731

Newsletter & Graphics Pat Latta
Exhibition Hanging
T: 02 4567 7489

HCAW Representative Sheila Sharp
M: 0408 161 284

Wednesday Art Group
Sharron Whittington
(02) 4572 5580
E: info@mtas.com.au

*"There are painters who transform the sun into a yellow spot,
but there are others who, thanks to their art and intelligence,
transform a yellow spot into the sun."*

Pablo Picasso

DEMONSTRATION

NEXT MEETING

Tuesday 13th August 2024 7.30pm

Stan Stevens Studio, Deerubbin Centre,
Hawkesbury Cultural Precinct, George St, Windsor

The basement carpark closes at 7.45pm

\$5 entry includes supper

Cheryle Yin-Lo Printmaking

Cheryle Yin Lo is a creative mentor, artist, printmaker and printmaking tutor at The Blue Mountains Creative Arts Centre and member of the Sydney Printmakers.



She will be demonstrating the technique of dry-point etching on perspex and 'cliche de verre' (glass print technique) and showing examples of these prints and sharing her passion for the diversity of printmaking techniques.

Cheryle completed her studies in printmaking at Sydney College of the Arts, with a focus on screenprinting and photography. Her creative endeavors draw heavily from her surroundings in the Blue Mountains World Heritage area, as well as her family's rich Chinese heritage in Australia.

Having resided in China, Peru, and Bangladesh, Cheryle's artistic perspective is

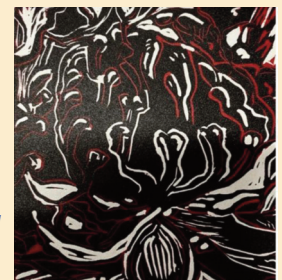


enriched by her global experiences, exploring various cultural nuances and landscapes.

Her artistic exploration spans multiple printmaking techniques, from solar plate etching to digital mediums, allowing her to delve into diverse layers within her work.



Cheryle was also the guest curator for the first exhibition held at the Hawkesbury Regional Gallery when it first opened in 2005. Her exhibitions have been showcased both domestically and internationally, with her pieces finding homes in numerous private collections.



You can find more of her works here:
www.facebook.com/www.creativetraveller.com.au

www.instagram.com/creativetraveller/
www.creativetraveller.com.au/

www.sydneyprintmakers.com.au/portfolio/cheryle-yin-lo/

For inquiries about this demonstration,
please phone Leigh at 0401 228 624



CLASSES

MTAS CHILDREN'S AFTER SCHOOL ART CLASSES

Teacher Marcella Pyke

Term 3 resumes on 29th & 31st July 2024

**Term fees of \$120 paid via direct deposit to MTAS,
Cash or by Creative Kids Vouchers.**

ENROLMENTS ESSENTIAL

Richmond Art Supplies

328 Windsor St, Richmond (next to Brynorms)

Ph: Deidre 0412 979 731

PORTRAIT GROUP

MTAS Portrait Group meets 2nd Saturday each month,
1- 4pm, \$15. Model, easels & afternoon tea provided.

BYO Painting/Drawing materials.

Next session 10th August

Richmond Art Supplies

328 Windsor St, Richmond (next to Brynorms)

Ph: Deidre 0412 979 731

Hawkesbury Community Arts Workshop

Social Saturdays held each month (bring your
art/craft and chat to potters, painters etc) will be at
K13 at 1pm .

The Piggery Studios are open on the first Saturday
each month.

Enquiries: hworkshop@yahoo.com

MTAS Art Group

1st & 3rd Wednesday each month.

from 10am – 4pm

Wednesday group Next dates 3rd and 17th July 2024

The Horse Judges Hut at the Hawkesbury showgrounds is the venue for
our 1st & 3rd Wednesday each month.

Enter by Gate 4 (the carpark gate) and drive taking the 3rd road on the
right to take you to the far side of the show ring. The hut is a separate
building on the right with some gravel parking. It has a shady verandah
with chairs and nearby toilets.

Inside there is air conditioning, fridge, sink, kettle, microwave, tables
and chairs. The HDAA are kindly allowing us to use this for \$2 per head.

Contact Sharron Whittington at (02)4572 5580 or email: info@mtas.com.au.

CASS REPORT

The CASS members exhibition, Art at the Royal, will
be held 11-27 October at the Royal Art Society NSW
Lavender Bay Gallery. Entry forms are available at
[https://combinedartsocieties.com/news-and-other-
events/](https://combinedartsocieties.com/news-and-other-events/) entries close 13th September.

The Art of Sydney Awards Exhibition is confirmed for
19th - 26th March 2025 to be held at Randwick Town
Hall. Entry forms will be available closer to the time.

CASS are pleased to welcome our latest member,
Lane Cove Art Society, and we look forward to their
artists participating in future events.

Keep an eye on the CASS website for updates of Art
in the Country workshops held at Kandos and keep the
CASS Cottage in mind for those weekend getaways -
at a discounted rate for MTAS members!

Cheers,
Kym

FIELD DAY

For venue or information, please ring Tony White
0410 624 918 or NAS website for further information
<https://nepeanartsociety.wildapricot.org/PLEIN-AIR>.

FOHacRG Inc.

In April 2025 FOHACARG will be presenting an exhibi-
tion titled "Inspired By Turner" to celebrate the 250th
Anniversary of the birth of J.M.W Turner, the influential,
British watercolour painter. His wonderful, atmospheric
works inspired many artists including the French Im-
pressionists such as Monet and Pissaro. Everyone is
invited to enter. More information closer to the date.



EXHIBITIONS

Bendigo Art Gallery

Paul Guest Drawing Prize 2024

Calling all Australian artists! Entries for the Paul Guest Drawing Prize are now open.

The Prize is a non-acquisitive cash award of \$18,000.

Open to all Australian citizens or residents for 12 months with eligible artworks completed since 1st July 2023.

Entries close: at 4 pm Friday 23rd August 2024.

BDAS and Bowral Art Gallery

Tim Copes Portrait Prize

Entry forms due 4th September

Judged by Kate Stevens

Bowral Art Gallery

Incorporated under the Bowral & District Art Society

Phone: 02 4861 4093 E:office@bdasgallery.com

Sydney's gallery scene is dynamic and diverse. Permanent and visiting exhibitions give you the work of up-and-coming artists.

Brett Whiteley Studio

2 Raper Street Surry Hills NSW 2010 Australia
(02) 9225 1881 brettwhiteleystudio@ag.nsw.gov.au

Explore one of Sydney's best kept secrets, the Brett Whiteley Studio. The Studio is managed by the Art Gallery of New South Wales.

Carriageworks

245 Wilson Street, Eveleigh NSW (02) 8571 9099
Carriageworks is the largest and most significant contemporary multi-arts centre of its kind in Australia. Carriageworks is open 10am - 6pm daily

The Artery Contemporary Aboriginal Art Gallery in

Darlinghurst specialises in art from remote Aboriginal communities, working with both emerging and established creatives and art centres and specialising in ethical and affordable Aboriginal artworks.

A reminder to members that we do have a portrait group with a live model every second Saturday of the month from 1 - 4 pm, cost \$15.00. If anyone would like to come along feel free to text me on 0412 979 731 If anyone is interested in sitting for a portrait or would like to suggest a sitter, please phone Deidre on the above number.



RICHMOND ART SUPPLIES

5% DISCOUNT FOR MTAS MEMBERS

QUALITY FINE ART MATERIALS
CLASSES & GALLERY
Weekly Classes

- Oils, Drawing, Acrylics Watercolours & Pastels 2hrs \$30
- Friday All media Class 3hrs \$30
- Portraits - 2nd Saturday \$12
- Local Artists Gallery \$4 for 4 months per painting hanging fee
- 20% commission on painting sales

Deidre Morrison 0412 979 731
Satya Morrison 0405 337 652

328 Windsor St, Richmond
(Next to Brynorns) 4578 3555



**The largest range of
Art Supplies and framing in
Australia under one roof.**

**With over 17,000
product lines**

For our complete catalogue visit our
web site www.artscene.com.au

Place an order by phone, fax, email or
visit us at (the rear of)
912-914 Victoria Road, West Ryde 2114
Phone 02 9807 6900 Fax 02 9809 6548
email is sales@artscene.com.au



THE PICTURE FRAMING WAREHOUSE
specialising in conservation framing of
all artwork

•READYMADE FRAMES AND KITS

computerised mat cutter for any
intricate mat cutting needs or desires

Ben Baxter

Unit 1, 129 Russell Street,
Emu Plains 2750

Ph: (02) 4735 8021

E: mondtex@gmail.com

Discount for Art Society Members

ArtSup

**Picture Framing
Fine Art Printing
Suppliers of Art
& Graphic Materials**

Cnr Manning Street & Second Ave.,
Kingswood
near University of Western Sydney

Open 5 & 1/2 days

Phone: (02) 4736 5866 Fax: (02) 4736 2640

Little River art Studios

Bracken Stud. Grose Wold

Artist Workshops

Enjoy a One day or Weekend
workshop with Experienced Art
Tutors on this beautiful,
historical horse property.
Join the mailing list today to find
out who's teaching and when!

Jeanette Starr 0414 761308
www.littleriverartstudios.com.au
brackenstud@iprimus.com.au

FRIDAY ART CLASS

with Deidre Morrison
All media

Work at your own pace
in relaxed, friendly
atmosphere.

Every Friday 12.30 - 3.30pm.
\$30 p.w.

Richmond Art Supplies
328 Windsor St, Richmond
Ph: Deidre 0412 979 731

Healing with Art 2024, Creativity for Self-Care

A year-long online
course designed to
empower you to
unlock your cre-
ative potential and
nurture your mental
and emotional
well-being.

Register Today!

Healing With Art 2024



Creativity for Self-Care

Register Today: [https://www.healingwithart.com.](https://www.healingwithart.com.au/healingwith-art-2024-2/)

[au/healingwith-art-2024-2/](https://www.healingwith-art-2024-2/)

EXHIBITIONS

Hawkesbury Regional Gallery & Museum

Ph 4560 4441, closed Tuesday

*'Origin', The Place
Where Something
Begins*



This exhibition pays homage to traditional printmaking practices using etching, wood-block and lithography while also extending an investigation into contemporary hybrid forms of printmaking with monoprints, unique state prints, photopolymer and new digital technologies. 28th June - 18th August.

'We Are Studios Elevate 2024'. 23rd August 2024 - 20th October 2024.

Art Gallery NSW

Archibald, Wynn and Sulman Exhibition

8th June - 8th September

Purple Noon

606 Terrace Rd, Freemans Reach Ph: 4579 6579

CLOSED: Monday/Tuesday/ Wednesday

(by appointment) OPEN 10:00am - 5:00pm:

Thursday/Friday 1:00pm – 4:00pm: Saturday/Sunday

robyn@purplenoongallery.com.au Online trading:

24/7...and follow @purplenoongallery on Instagram

'Home Delivery'

A collection of houses inspired art is focused on depictions of houses and other dwelling places, reflecting a diversity of physical structures – from lone houses surrounded by nature, to buildings in urban and suburban settings. The exhibition gives rise to thoughts of home as a social construct, idea or state of mind. Drawn from life, memory, imagination, or from sources such as films, books, newspapers and magazines, the artworks in the exhibition are bound to reveal a variety of human presences and traces of activity. I find it quite an exciting prospect and one that



Jocelyn Maughan^{OAM}

ARTIST 0417 441 938

E: jocelyn.maughan@yahoo.com.au



www.jocelynmaughan.com

drawings, paintings, oil, watercolour, tempera
portraits, figure compositions, lino prints

Fiona George

ART | LIFESTYLE | WELLNESS

Welcome,

I empower women to shine by stepping out of their comfort zone to balance, restore and support a healthier life.

Is Your Health Important?

For more information fionageorge.com.

M: 0418 297 167

E: fiona@fionageorge.com

Purple Noon Gallery

Beautiful Art, Sculpture & Framing

An enchanting sandstone gallery and garden with a relaxed and rustic ambience.

Contemporary and fine art, sculpture, gifts and jewellery.

Also leaders for all picture framing requirements.

606 Terrace Rd, Freemans Reach 02 4579 6579
purplenoongallery.com.au

WELCOME TO NEW MEMBER

Rosemary Phillis

EXHIBITIONS

should attract a good deal of interest. Professor Nicole Gurrán, Urban Planner, The University of Sydney, School of Architecture, Design and Planning, to open the show.

Please join us on Saturday 3rd August at 3:00 pm. Great company and opening drinks with some of the artists.

The Village Kitchen Kurrajong

83 Old Bells Line of Road, Kurrajong Village

Ph:4573 0988

Stephen Hoysted





Hawkesbury Artists & Artisans Trail

Open Studio Weekend

Saturday 24th & Sunday 25th August 2024

10am to 4pm Daily

Free Entry

www.haat.com.au

Our Sponsors



Discover the Hawkesbury Art Trail

Open Studio Weekend 24 & 25 Aug 2024

- **Piggery Lane Studios & Gallery** ~ Malcolm Robertson, Kym Morris Sharron & Shelley Whittington, Marian Wilcox, Jenny Lloyd
D9 Campus Drive, UWS Richmond Campus (off Blacktown Road)
M: 0417 456 153 (Malcolm - President)
- **Yvonne West** ~ "Studio 46"
46 Douglas St, Hobartville. M: 0411 543 049
- **Richmond Art Supplies** ~ Deidre & Satya Morrison
Shop 1 / 328 Windsor St, Richmond. Ph: 02 4578 3555
- **Jeanette Starr** ~ "Little River Art Studios"
For more information please phone M: 0414 761 308
- **Marcia Rea** ~ "Marcia Rea Fine Art Studio"
522 Terrace Rd, Freemans Reach. M: 02 4579 6338
- **Karen Tanner with Guest Artists** ~ "Artistic Directions"
119 Redbank Rd, North Richmond. M: 0409 159 640
- **Janelle Wymer** ~ "Zilch Artz Studio"
82A Carters Road, Grose Vale. M: 0415 551 455
- **Dawn Packer with Guest Artists** ~ "Dawn Packer Studio"
629 Bells Line of Road, Kurmond NSW M: 0413 272 745
- **Cass & Jeff Walsh** ~ "Scapes of Art"
2 Primrose Place, Windsor, NSW M: 0487 814 428
- **Hawkesbury Regional Gallery** ~ Open Sat & Sun 10am - 3pm
300 George St, Windsor. Ph: 02 4560 4441

Visit our website www.haat.com.au for further information and to see our maps

Combined Art Societies of Sydney Inc.

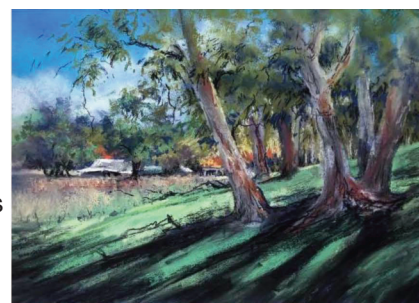
"Art in the Country" with Tutor, Jenny Macnaughton

****No 2** 4-DAY WATERCOLOUR PLEIN AIR/STUDIO WORKSHOP AT KANDOS**
Or 1-DAY ONLY (Sunday)

Prepare to embark on a whimsical journey in Kandos, where breathtaking landscapes await your artistic touch.



Picture yourself surrounded by the serene beauty of pastoral vistas, while the towering, awe-inspiring cliffs of the renowned Wollemi National Park stand majestically in the distance. In this enchanting setting, you'll receive expert guidance, transforming your sketches into masterpieces with the delicate strokes of watercolours. Let your creativity flow in this picturesque haven, where nature's wonders and artistic inspiration seamlessly blend.



Dates **7, 8, 9 and 10 November 2024**

Times: 9am to 3.30pm daily

Price: \$440 (4 day) or

\$110 for 1 day only (11.8.24)

Address: 72 Buchanan Street, Kandos

Price is for workshop only (Includes tuition, morning-tea and use of the facility. Lunch and accommodation is not included) Students will need to book their own accommodation.



Email combinedsocieties@yahoo.com.au to receive the Booking Form for this workshop.