



# LIGHT&SHADE

Monthly Newsletter of the Macquarie Towns Arts Society Inc.

July 2024

Volume 32 Issue 6

PO Box 1058 Richmond NSW 2753  
info@mtas.com.au  
www.mtas.com.au

THE SOCIETY MEETS ON  
2ND TUESDAY OF EACH MONTH

## from the President

Hello All,

Well, we are shivering through the chilly months but I hope you are still managing to stay arty in your endeavours.

We really enjoyed our Urban Sketching demonstration with Dtai Hansathit in June. We are looking forward to seeing Joe Cartwright with his Demonstration on July 9th working in Watercolours. Joe has been doing great things online with his classes, website and Youtube channel so well worth seeing him at work and hearing about how well he is doing.

In July we are preparing for our popular Richmond Marketplace Exhibition of small and medium works to be held in August on 15th - 18th. We always have a lot of foot traffic through and it's a good chance to sell your art, meet the locals to showcase and tell them more about our Art Society and its members. Make sure you look out for your entry form with this Newsletter.

In June some of our members (including me) attended a Mosaic Full Day Workshop with the very talented Janelle Wymer, put on by FOHACaRG (Friends of the Hawkesbury Art Community and Regional Gallery). It was a fantastic day and we are thinking of putting on one of these workshops soon also. So stay tuned for more information.

Our Wednesday Art Group and Portrait Group continue to be popular activities for us, so make sure you check them out if you haven't already.

The Children's School Holiday Workshops are on again 8th - 19th July so check out our website to enrol as these fill up fast [www.mtas.com.au](http://www.mtas.com.au)

Also WinterFest is on 6th & 7th July at the Hawkesbury Showground and could be a great opportunity for some sketching or painting on site.

Remember it's renewal time for your MTAS Membership with the new financial year 1st of July.

Stay warm and creative everyone! Look forward to seeing you all soon,  
Satya

## MTAS COMMITTEE 2023 - 2024

**President** Satya Morrison  
Publicity Officer, Technical Officer  
HAAT Rep. Social Media & Web  
M: 0483 895 098

**Vice President** Kym Morris  
CASS President  
M: 0413 809 685

**Treasurer** Sheilana Prosper  
Public Officer  
M: 0473 806 946

**Asst. Treasurer** Mark Wilson  
M: 0408 343 629

**Secretary** Pat Bakarich  
M: 0415 200 446

**Asst. Secretary** Sue Kennedy  
M: 0448 224 287

**Membership Officer** Sally Johnstone  
M: 0421 324 124

**Functions Officer** Leigh Cunningham  
M: 0401 228 624

**Children's Art Co-ordinator** Deidre Morrison  
FoHAC&RG Representative  
T: 4578 3555 M: 0412 979 731

**Newsletter & Graphics** Pat Latta  
Exhibition Hanging  
T: 02 4567 7489

**HCAW Representative** Sheila Sharp  
M: 0408 161 284

**Wednesday Art Group**  
Sharron Whittington  
(02) 4572 5580  
E: info@mtas.com.au

*“What moves men of genius, or rather what inspires their work,  
is not new ideas, but their obsession with the idea  
that what has already been said is still not enough.”*

*Eugene Delacroix*

## DEMONSTRATION

### NEXT MEETING

Tuesday 9th July 2024 7.30pm

Stan Stevens Studio, Deerubbin Centre,  
Hawkesbury Cultural Precinct, George St, Windsor

The basement carpark closes at 7.45pm

\$5 entry includes supper

## Joe Cartwright Watercolour

*Joe Cartwright is an Australian watercolour artist and has been painting and teaching watercolour for over 25 years. He has articles published about his work and techniques in the Australian Artist Magazine, Artist's Palette, and Leisure Painter in the UK.*

*Joe has received over 90 awards for his work including the John Copes Watercolour Prize. He paints in a fluid and spontaneous*

*manner. This allows him to capture the mood and atmosphere of his subject with a style that encourages the viewer to involve themselves with his work.*

*He covers a wide range of subjects, believing any concept can lead to an exciting work of art.*



*He is always looking for an interesting viewpoint which he can bring to his audience allowing them to connect more closely to the world around them.*

*Joe enjoys teaching and has a successful YouTube channel where he can pass on his knowledge to others who want to learn this wonderful craft of watercolour painting.*



*You can find more of his works here:*

*[www.joecartwright.com.au](http://www.joecartwright.com.au)*

*[www.youtube.com/@joecartwright](http://www.youtube.com/@joecartwright)*

*[www.paintingwithwatercolors.com/](http://www.paintingwithwatercolors.com/)*

*[www.instagram.com/joecartwrightartist/](http://www.instagram.com/joecartwrightartist/)*

*Books: Mastering Watercolor – A Practical Guide  
Watercolor Step by Step*

*For inquiries about this demonstration,  
please phone Leigh at 0401 228 624*

## CLASSES

### MTAS CHILDREN'S AFTER SCHOOL ART CLASSES

*Teacher Marcella Pyke*

**Term 3 resumes on 29th & 31st July 2024**

**Term fees of \$120 paid via direct deposit to MTAS,  
Cash or by Creative Kids Vouchers.**

**ENROLMENTS ESSENTIAL**

Richmond Art Supplies

328 Windsor St, Richmond (next to Brynorms)

**Ph: Deidre 0412 979 731**

### PORTRAIT GROUP

MTAS Portrait Group meets 2nd Saturday each month,  
1- 4pm, \$15. Model, easels & afternoon tea provided.

BYO Painting/Drawing materials.

**Next session 13th July**

Richmond Art Supplies

328 Windsor St, Richmond (next to Brynorms)

**Ph: Deidre 0412 979 731**

### Hawkesbury Community Arts Workshop

Social Saturdays held each month (bring your  
art/craft and chat to potters, painters etc) will be at  
K13 at 1pm .

The Piggery Studios are open on the first Saturday  
each month.

Enquiries: hworkshop@yahoo.com

### MTAS SCHOOL HOLIDAY ART & CRAFT WORKSHOPS

will run from 8th - 19th July 2024

For 5 to 15 year olds

Include Drawing, Painting, Pottery, Decorating  
Treasure Boxes, Tie Dyed T-shirts, Polymer Clay  
Dragons, Jewellery and more.

Cost: \$15 per 2hr class, all equipment supplied  
with COVID safe hygiene practices.

at Richmond Art Supplies

328 Windsor St, Richmond (next to Brynorms)

**BOOKINGS ESSENTIAL**

**Ph: Deidre 0412 979 731**

## CASS REPORT

CASS is delighted to announce a members' exhibition will be held at the Royal Art Society of NSW in their premises in Lavender Bay. 'Art at the Royal' is open to members of the CASS art societies and of course that includes Macquarie Towns Art Society. The entry forms will be available in the next few weeks and the exhibition will run from 11th to 27th October. The judge is Anne Cape and the awards include a 'Best Exhibit in Show', a second and third prize and Commended awards. Please read the terms and conditions carefully and ensure your work meets the size, number and hanging requirements and if you have any questions, get in touch with the MTAS committee or me.

Negotiations are continuing for an Art of Sydney exhibition to be held in March 2025 - watch this space for more details as they become available.

Cheers,  
Kym

## FIELD DAY

For venue or information, please ring Tony White  
0410 624 918 or NAS website for further information  
<https://nepeanartsociety.wildapricot.org/PLEIN-AIR>.

## FOHacRG Inc.

AGM 1st August 7pm at 526 George St, Sth Windsor.  
Phone Margaret 04774440

### MTAS Art Group 1st & 3rd Wednesday each month. from 10am – 4pm

#### Wednesday group

Next dates 3rd and 17th July 2024

The Horse Judges Hut at the Hawkesbury show-  
grounds is the venue for our 1st & 3rd Wednesday  
each month.

Enter by Gate 4 (the carpark gate) and drive taking the  
3rd road on the right to take you to the far side of the  
show ring. The hut is a separate building on the right  
with some gravel parking. It has a shady verandah  
with chairs and nearby toilets.

Inside there is air conditioning, fridge, sink, kettle, mi-  
crowave, tables  
and chairs. The HDAA are kindly allowing us to use  
this for \$2 per head.

Contact Sharron Whittington at (02)4572 5580 or  
email: [info@mtas.com.au](mailto:info@mtas.com.au).

## EXHIBITIONS

### Bendigo Art Gallery

#### Paul Guest Drawing Prize 2024

Calling all Australian artists! Entries for the Paul Guest Drawing Prize are now open.

The Prize is a non-acquisitive cash award of \$18,000.

Open to all Australian citizens or residents for 12 months with eligible artworks completed since 1st July 2023.

Entries close: at 4 pm Friday 23rd August 2024.

### BDAS and Bowral Art Gallery

#### The Agency Still Life Prize

Entry forms due 10th July

Judged by Maryanne Wick

#### Tim Copes Portrait Prize

Entry forms due 4th September

Judged by Kate Stevens

Bowral Art Gallery

Incorporated under the Bowral & District Art Society

Phone: 02 4861 4093 E:office@bdasgallery.com

Sydney's gallery scene is dynamic and diverse. Permanent and visiting exhibitions give you the work of up-and-coming artists.

### Brett Whiteley Studio

2 Raper Street Surry Hills NSW 2010 Australia

(02) 9225 1881 brettwhiteleystudio@ag.nsw.gov.au

Explore one of Sydney's best kept secrets, the Brett Whiteley Studio. The Studio is managed by the Art Gallery of New South Wales.

### Carriageworks

245 Wilson Street, Eveleigh NSW (02) 8571 9099

Carriageworks is the largest and most significant contemporary multi-arts centre of its kind in Australia. Carriageworks is open 10am - 6pm daily

### The Artery Contemporary Aboriginal Art Gallery in

Darlinghurst specialises in art from remote Aboriginal communities, working with both emerging and established creatives and art centres and specialising in ethical and affordable Aboriginal artworks.

WELCOME TO NEW MEMBER

Paul Smith

**Renewals are due on 1st July 2024.  
Please go to the website and download a  
Membership Form and post it off today!**

### RICHMOND ART SUPPLIES

5% DISCOUNT FOR MTAS MEMBERS

QUALITY FINE ART MATERIALS  
CLASSES & GALLERY  
Weekly Classes

- Oils, Drawing, Acrylics Watercolours & Pastels 2hrs \$30
- Friday All media Class 3hrs \$30
- Portraits - 2nd Saturday \$12
- Local Artists Gallery \$4 for 4 months per painting hanging fee
- 20% commission on painting sales

Deidre Morrison 0412 979 731

Satya Morrison 0405 337 652

328 Windsor St, Richmond  
(Next to Brynorns) 4578 3555



**The largest range of  
Art Supplies and framing in  
Australia under one roof.**

**With over 17,000  
product lines**

For our complete catalogue visit our  
web site [www.artscene.com.au](http://www.artscene.com.au)

Place an order by phone, fax, email or  
visit us at (the rear of)  
912-914 Victoria Road, West Ryde 2114  
Phone 02 9807 6900 Fax 02 9809 6548  
email is sales@artscene.com.au



**THE PICTURE FRAMING WAREHOUSE**  
specialising in conservation framing of  
all artwork

#### •READYMADE FRAMES AND KITS

computerised mat cutter for any  
intricate mat cutting needs or desires

#### Ben Baxter

Unit 1, 129 Russell Street,  
Emu Plains 2750

Ph: (02) 4735 8021

E: mondtex@gmail.com

Discount for Art Society Members

# ArtSup

**Picture Framing  
Fine Art Printing  
Suppliers of Art  
& Graphic Materials**

Cnr Manning Street & Second Ave.,  
Kingswood  
near University of Western Sydney

Open 5 & 1/2 days

Phone: (02) 4736 5866 Fax: (02) 4736 2640

## Little River art Studios

Bracken Stud. Grose Wold

#### Artist Workshops

Enjoy a One day or Weekend  
workshop with Experienced Art  
Tutors on this beautiful,  
historical horse property.

Join the mailing list today to find  
out who's teaching and when!

Jeanette Starr 0414 761308

[www.littleriverartstudios.com.au](http://www.littleriverartstudios.com.au)

[brackenstud@iprimus.com.au](mailto:brackenstud@iprimus.com.au)

### FRIDAY ART CLASS

*with Deidre Morrison  
All media*

*Work at your own pace  
in relaxed, friendly  
atmosphere.*

Every Friday 12.30 - 3.30pm.  
\$30 p.w.

**Richmond Art Supplies**  
328 Windsor St, Richmond  
Ph: Deidre 0412 979 731

### Healing with Art 2024, Creativity for Self-Care

A year-long online  
course designed to  
empower you to  
unlock your cre-  
ative potential and  
nurture your mental  
and emotional  
well-being.

*Register Today!*

*Healing With Art 2024*



**Creativity for Self-Care**

Register Today: <https://www.healingwithart.com.au/healingwith-art-2024-2/>

## EXHIBITIONS

### Hawkesbury Regional Gallery & Museum

Ph 4560 4441, closed Tuesday

*'Origin', The Place  
Where Something  
Begins*

This exhibition pays homage to traditional printmaking practices using etching, wood-block and lithography while also extending an investigation into contemporary hybrid forms of printmaking with monoprints, unique state prints, photopolymer and new digital technologies. 28th June - 18th August.



### Art Gallery NSW

Archibald, Wynn and Sulman Exhibition

8th June - 8th September

### Purple Noon

606 Terrace Rd, Freemans Reach Ph: 4579 6579

CLOSED: Monday/Tuesday/ Wednesday

(by appointment) OPEN 10:00am - 5:00pm:

Thursday/Friday 1:00am - 4:00pm: Saturday/Sunday

robyn@purplenoongallery.com.au Online trading:

24/7...and follow @purplenoongallery on Instagram

*'Within the Landscape' Mellissa Read-Devine*

I am delighted to welcome the talented Mellissa Read-Devine back for another solo exhibition at Purple Noon Gallery. In these times of so much unsettling news, it is a true joy to present a stunning collection of her most uplifting and vibrant landscape paintings.



Mellissa's distinctive style, marked by her energizing palette and layered brush strokes, has evolved into a macro-pointillist approach. Her work celebrates shape, colour, and the brushstrokes of contemporary impressionism.

The combination of quirkiness and calm in her pieces creates a strong spiritual foundation that resonates deeply with viewers. Her idiosyncratic characteristics make her work highly sought after by both Australian and international collectors.



Jocelyn Maughan<sup>OAM</sup>

ARTIST 0417 441 938

E: [jocelyn.maughan@yahoo.com.au](mailto:jocelyn.maughan@yahoo.com.au)



[www.jocelynmaughan.com](http://www.jocelynmaughan.com)

drawings, paintings, oil, watercolour, tempera  
portraits, figure compositions, lino prints

### Fiona George

## ART | LIFESTYLE | WELLNESS

Welcome,

I empower women to shine by stepping out of their comfort zone to balance, restore and support a healthier life.

Is Your Health Important?

For more information [fionageorge.com](http://fionageorge.com).

**M: 0418 297 167**

**E: [fiona@fionageorge.com](mailto:fiona@fionageorge.com)**

## Purple Noon Gallery

Beautiful Art, Sculpture & Framing

An enchanting sandstone gallery and garden with a relaxed and rustic ambience.

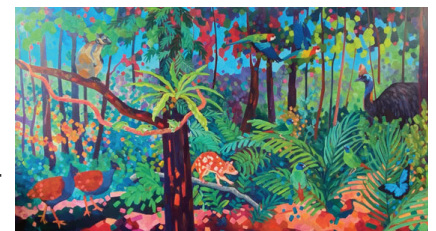
Contemporary and fine art, sculpture, gifts and jewellery.

Also leaders for all picture framing requirements.

606 Terrace Rd, Freemans Reach 02 4579 6579  
[purplenoongallery.com.au](http://purplenoongallery.com.au)

## EXHIBITIONS

In her unique multi-coloured style, Mellissa brings the natural landscape to life. She merges pixelated explosions of paint with a constantly changing pattern or sequence of elements. Colours of the light spectrum are beautifully interrupted by delicate daubs that flicker across the canvas with grace and harmony. In this exhibition, Mellissa's deep connection with the natural landscape is evident, highlighting her profound love for the beauty of our environment and its flora and fauna. Saturday 1st June - 6th July.



July will be a stockroom exhibition and new work.

### The Village Kitchen Kurrajong

83 Old Bells Line of Road, Kurrajong Village

Ph:4573 0988

*'Australia's Nature'* Nicolee Payne until 25th July