



LIGHT & SHADE

Monthly Newsletter of the Macquarie Towns Arts Society Inc.

August 2019

Volume 27 Issue 7

THE SOCIETY MEETS ON
2ND TUESDAY OF EACH MONTH

PO Box 1058 Richmond NSW 2753
info@mtas.com.au
www.mtas.com.au

President: Kym Morris 0413 809 685
Secretary: Pat Bakarich 0415 200 446
Treasurer: Margaret Mackisack 4573 2565

from the President

Finally. We've moved. Farewell Yarramundi, you served us well. G'day Musson Lane. Here's to our new home, a great space to share our work, hold classes and demonstrations, exchange ideas and generally a welcoming place to meet.

A big thank you to Narelle, Sharron and Sheila for getting us moved across at very short notice. We will be unpacking and setting up over the next few weeks to see us ready for the next painting day. Monthly meetings and demonstrations will continue at the Stan Stevens Studio and our next guest artist is Stephen Travers showing us his realistic oil painting technique. I'm sure there will be lots of tips to take home.

It's a very busy season for art. The Richmond Marketplace

sale will be on the 15th to 18th August and we will be preparing for the Hawkesbury Art Fair which has been brought forward this year to September 13 to October 13 - more details of this as they come to hand.

Don't forget the AGM on September 10th, we will need volunteers for the committee, in particular a Treasurer, and other roles need your support to keep MTAS relevant to your needs and able to continue to sustain art in the Hawkesbury community..

Cheers,
Kym

DEMONSTRATION

NEXT MEETING

Tuesday 13th August 2019 7.30pm

Stan Stevens Studio, Deerubbin Centre,
Hawkesbury Cultural Precinct, George St, Windsor

The basement carpark closes at 7.45pm

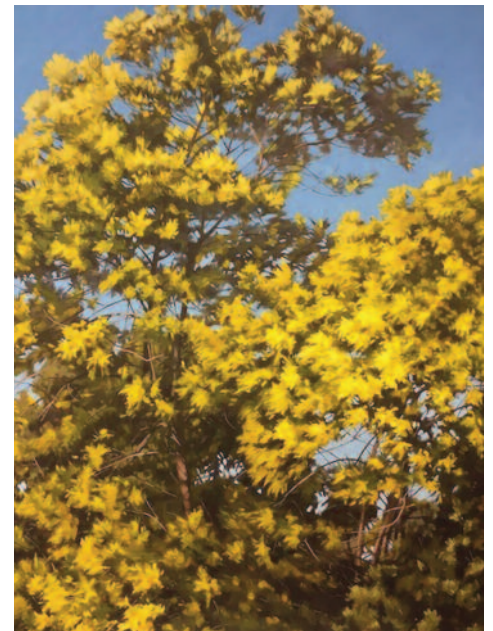
\$5 entry includes supper



Steven Travers - Realistic Painter

We are very happy to have Stephen Travers with us to demonstrate a Gymea Lily oil painting at our next monthly meeting on Tuesday, 13th August, 7:30pm at the Stan Stevens Studio, Deerubbin Centre, George St, Windsor.

In his work Stephen pursues areas which have always captured his imagination – the light, colour, shape and texture of the Australian natural environment.



To see more of Stephen's work visit www.stephentraversart.com

Field Day

A field day with Nepean and MTAS members is held every Thursday.

For venue or information, please ring Jeff Eyles on 0416 975 581 or NAS website for further information
<http://nepeanartsociety.wildapricot.org/plein-air-painting-group>

Calendar of Events

DEMONSTRATION

13th August – *Stephen Travers – Realistic Painter*
10th September - *AGM – A representative from Hawkesbury Regional Gallery (probably Diana Robson) will talk about setting up/hanging an exhibition.*

WORKSHOP

8th September - *Steven Travers*

CASS report

CASS are holding four small exhibitions of award-winning artists in August at the Gallery ONE88 Fine Arts in Katoomba. A 30th Anniversary exhibition of 30cm x 30cm paintings from 13th August to 1st September, opening celebration the afternoon of August 17th from 2 - 4pm. Traditional Treasures from 13th to 18th August, opening celebration on the 17th August, 2- 4pm. Little Gems from the 20th to 25th August, opening celebration 24th August 2 - 4pm and Creative Inspirations from 27th August to 1st September, celebrating on the 31st August 2 - 4pm. There will be a raffle for a wonderful rural landscape painting by Ross Patterson.

FOHacRG Inc.

The coach trip to Canberra and the Monet exhibition was enjoyed by all.

A street stall held on Saturday 27th raised several hundred dollars to assist with conservation projects.

AGM, Rozzoli Room, Deerubbin Centre, Thursday August 1st, 7.30pm. All positions vacant, Members are invited to attend.

Contact Sheila Sharp 0408161284, se.sharp@bigpond.net.au

Hawkesbury Community Arts Workshop

Our new website hcaworkshop.com.au is available. Virginia Wheatley's workshop will be held on 19th October. The Greg Hansell workshop is delayed until 2020. K13 and the Piggery Lane Studios will open on Saturday 7th September, the Secret Garden open day. Visit and buy some great pottery and artworks.
hawkesburycommunityartsworkshop@yahoo.com.au

Classes

PORTRAIT GROUP

MTAS Portrait Group meets 2nd Saturday each month, 1- 4pm, \$12. Model, easels & afternoon tea provided, BYO Painting/Drawing materials.
Next session Saturday 10th August at
Richmond Art Supplies
328 Windsor St, Richmond (next to Brynorms)
Ph: Deidre 0412 979 731

LIFE DRAWING GROUP

MTAS Life Drawing Group meets
3rd Tuesday each month
7pm - 9pm \$12. Model, easels & supper.
BYO drawing materials.
Next session, Tuesday 20th August at
Richmond Art Supplies
328 Windsor St, Richmond (next to Brynorms)
Ph: Deidre 0412 979 731

MTAS CHILDREN'S AFTER SCHOOL ART CLASSES

Teacher Marcella Pyke

Term 3 begins

Monday 29th & Wednesday 31st July 2019

\$96 (8 week term) incl. materials

ENROLMENTS ESSENTIAL

Richmond Art Supplies

328 Windsor St, Richmond (next to Brynorms)

Ph: Deidre 0412 979 731

FRIDAY ART CLASS

with Deidre Morrison

All media

Work at your own pace in relaxed, friendly atmosphere.

Every Friday 12.30 - 3.30pm.

\$25 p.w.

Richmond Art Supplies

328 Windsor St, Richmond (next to Brynorms)

Ph: Deidre 0412 979 731

Vale

*Our sadness at the news of the passing of
Lorna Campbell on 6th April.
She was President of MTAS for several years
in 1980s . She was 101 yrs when she passed.
Well respected, Lorna was a member and
supporter of many community groups.*

WELCOME TO NEW MEMBERS

Monika Scheffer and Tammy Porter.

Exhibitions

Hawkesbury Regional Gallery

Ph 4560 4441, closed Tuesday

'What We Have To Say'

A timely exhibition, exploring creativity and the feminine perspective. What we have to say will look at narrative, ideas, dialogue and aesthetic expression of women artists in contemporary Australia

26 July - 8 September 2019

Hawkesbury Art Fair 2019

A selection of works from local art groups and artists.

13 September - 13 October 2019

Art Gallery NSW

Archibald, Wynne and Sulman 11th May - 8th September



Jeffrey Smart 11th May - 29th September



Purple Noon

606 Terrace Rd,
Freemans Reach

Ph:4579 6579

puplenoon@bigpond.com

Wednesday to Friday 10am - 5pm

Saturday and Sunday 11am - 4pm

'Points of View'

Leisl Mott, Lucila Zentner,

Sophie Perez

Three extraordinary artists who take a view of place that articulates landscape and nature. Recent works highlight detail and warm confidence encapsulating glowing colours in unusual combinations.

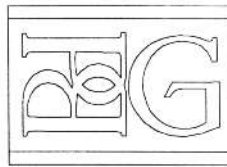
To be opened by Kath von Witt, director of Hawkesbury Regional Gallery, on Saturday 20th July at 6:00pm

The Village Kitchen Kurrajong

83 Old Bells Line of Road Kurrajong Village 4573 0988

'The Magic of Colour and Tone' Megan Campbell-Judd

31st August - 4th October



PATONGA BAKEHOUSE GALLERY
19 BAY STREET PATONGA 2256 NSW
- AUSTRALIA - PH: 02 43791102

THE ART OF
JOCELYN MAUGHAN & ROBIN NORLING

Purple Noon Gallery

Beautiful Art, Sculpture & Framing

An enchanting sandstone gallery and garden with a relaxed and rustic ambience.

Contemporary and fine art, sculpture, gifts and jewellery.

Also leaders for all picture framing requirements.

Open Wed. to Fri. 10am - 5pm Saturday, Sunday 11am - 4pm.

Closed Monday, Tuesday.

606 Terrace Rd, Freemans Reach 02 4579 6579

purplenoongallery.com.au

Little River
art
Studios

Bracken Stud. Grose Wold
Artist Workshops
Enjoy a One day or Weekend workshop with Experienced Art Tutors on this beautiful, historical horse property. Join the mailing list today to find out who's teaching and when!

Jeanette Starr 0414 761308
www.littleriverartstudios.com.au
brackenstud@iprimus.com.au

- Art & Craft Classes
- Art Therapy Classes
- Crystal Healing Therapy
- Meditation Classes
- Wellness for Women Self-Development Workshops

Adults, Children & Pre-Schoolers

BOOKINGS ARE ESSENTIAL

WE LOVE REFERRALS - Receive a **FREE GIFT** when you refer a family member or friend for a class or workshop

Fiona 0418 297 167
http://www.fionageorge.com

The Magic of Colour and Tone

Solo Art Exhibition

By Megan Campbell-Jubb



31st August to 4th October 2019

The Village Kitchen Kurrajong

83 Old Bells Line of Rd,

Kurrajong

ph 45730988

Megan is a Blue Mountains Artist who loves to portray a sense of wonder in her paintings, whether it be portraits,

scenes, wildlife or abstract. Megan is constantly growing & evolving artistically & has won several artistic awards.

Come along to The Village Kitchen Kurrajong & while you are enjoying a coffee or meal take in The Magic of Colour and Tone.



CREATIVE COLLAGE, PRINTMAKING AND WATERCOLOUR

Saturday, 19th October 2019

10am – 3pm

Hawkesbury Community Arts Workshop - Building K13

Western Sydney University, Richmond

Free parking



Tutor : Virginia Wheatley

M: 0408 618 240 E: bluetoucanart@bigpond.com

- Printmaking and collage using Japanese papers and unique “lift off” techniques.
- Watercolour and acrylic paints used – no oil paints or printing press needed.
- Create new artwork and/or re-work your old watercolour art into a mixed media
- Technique ideal for watercolour canvas – no framing costs!

Japanese papers and some other materials and equipment supplied.

Cost: \$50 members HCAW \$60 non-members

Bookings essential - contact Virginia.

Full materials list on booking

Inspired by Barbara Spence

Winner 2007 International Award for Abstract /

Experimental International Award for Abstract /

Experimental Art



**The largest range of
Art Supplies and framing in
Australia under one roof.**

**With over 17,000
product lines**

For our complete catalogue visit our
web site www.artscene.com.au

Place an order by phone, fax, email or
visit us at (the rear of)
912-914 Victoria Road, West Ryde 2114
Phone 02 9807 6900 Fax 02 9809 6548
email is sales@artscene.com.au

Discount for Art Society Members

ArtSup

Picture Framing

Fine Art Printing

**Suppliers of Art
& Graphic Materials**

Cnr Manning Street & Second Ave.,
Kingswood
near University of Western Sydney

Open 5 & 1/2 days

Phone: (02) 4736 5866 Fax: (02) 4736 2640

POSITION VACANT TREASURER

A Member with some bookkeeping skills is needed for
the year September 2019-2020

Treasurer needs to attend a Committee Meeting of 2
hours each month, provide a monthly report and do
some banking weekly

Job satisfaction is high and Committee
is friendly!

Financial remuneration is low (as in nil)!

VOLUNTEERING

IS GOOD FOR YOUR HEALTH

Contact Secretary Pat on 0415 200 446

POSITION VACANT SUPPER PERSON

A Member is needed to purchase and lay
out the light supper on our monthly
Demonstration Meetings
All expenses for milk, biscuits, crackers etc.
are fully reimbursed.

Please give some of your time
to support your Arts Society

Perhaps a group of 2 or 3 members could
form a group and take over this
task that all members really enjoy.

Contact Secretary Pat on 0415 200 446



THE PICTURE FRAMING WAREHOUSE
specialising in conservation framing of
all artwork

**•READYMADE FRAMES
AND KITS**

computerised mat cutter for any
intricate mat cutting needs or desires

Ben Baxter

Unit 1, 129 Russell Street,
Emu Plains 2750

Ph: (02) 4735 8021

E: mondtex@gmail.com



Richard Chao Workshop



**ART THERAPY FOR WOMEN
CRYSTAL HEALING THERAPY**

**MEDITATION CLASSES
Adults**

Children (11 years - 16 years)

PRE-SCHOOLERS

ART & CRAFT CLASSES

Boys & Girls (3years - 5years)

BOOKINGS ESSENTIAL

ENQUIRIES: Fiona 0418 297 167

EMAIL: info@fionageorge.com

RICHMOND ART SUPPLIES

5% DISCOUNT FOR MTAS MEMBERS

**QUALITY FINE ART MATERIALS
CLASSES & GALLERY**
Weekly Classes

- Oils, Drawing, Acrylics Watercolours & Pastels 2hrs \$20
- Friday All media Class 3hrs \$25
- Monthly Art Groups \$10
- Portraits - 2nd Saturday \$12
- Local Artists Gallery \$2 for 4 months 20% commission on painting sales

Deidre Morrison 0412 979 731
Satya Morrison 0405 337 652

328 Windsor St, Richmond
(Next to Brynorns) 4578 3555